

Getting Started

Required Items:

- ❖ MicroSD with SX OS [boot.dat] – [Download](#)
- ❖ Xecuter SX Lite
- ❖ Switch Lite
- ❖ Fine-Tip Soldering Iron (340c) / Solder
- ❖ Tri-Wing Y00 and Phillips #00
- ❖ Thermal Paste

Recommended Tools:

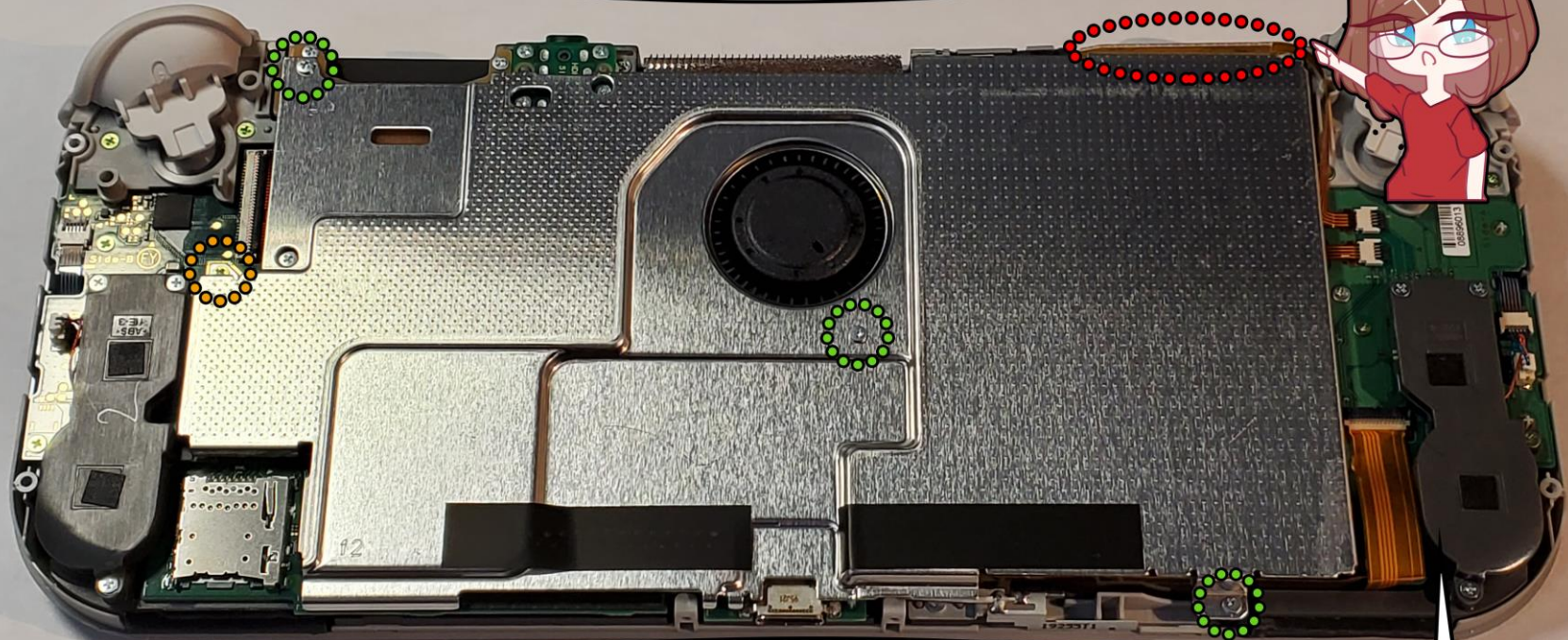
- ❖ Liquid Flux
- ❖ Microscope or Jeweler's Glasses
- ❖ Isopropyl Alcohol (91% or Higher)
- ❖ Cotton Swabs / Micro Swabs
- ❖ Tin Snips / Cutters
- ❖ Kapton / Electrical Tape



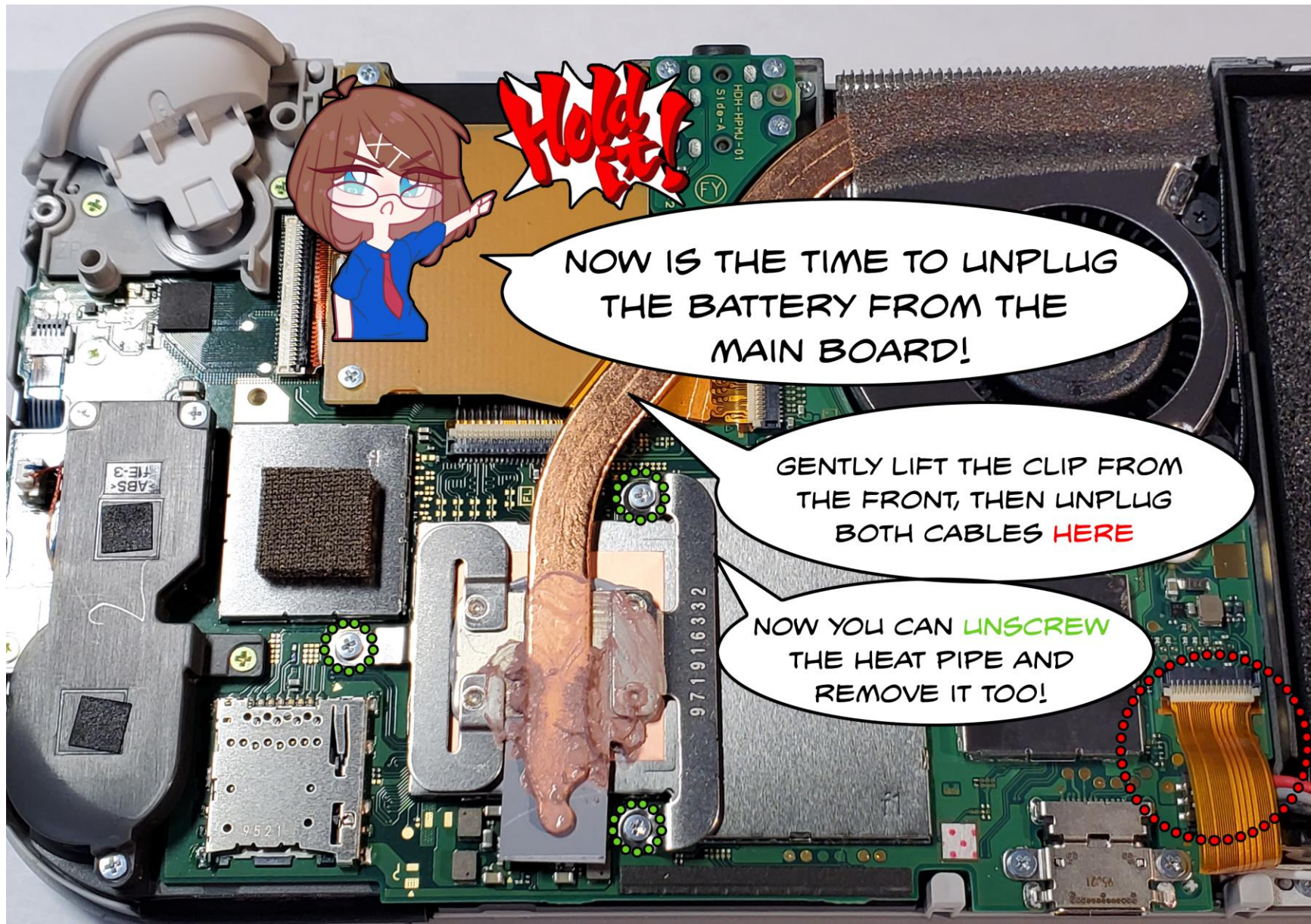
START OFF BY REMOVING THE 4 TRI-WING SCREWS AND 4 PHILLIPS SCREWS. DON'T FORGET TO TAKE OUT YOUR GAME AND SD CARD!

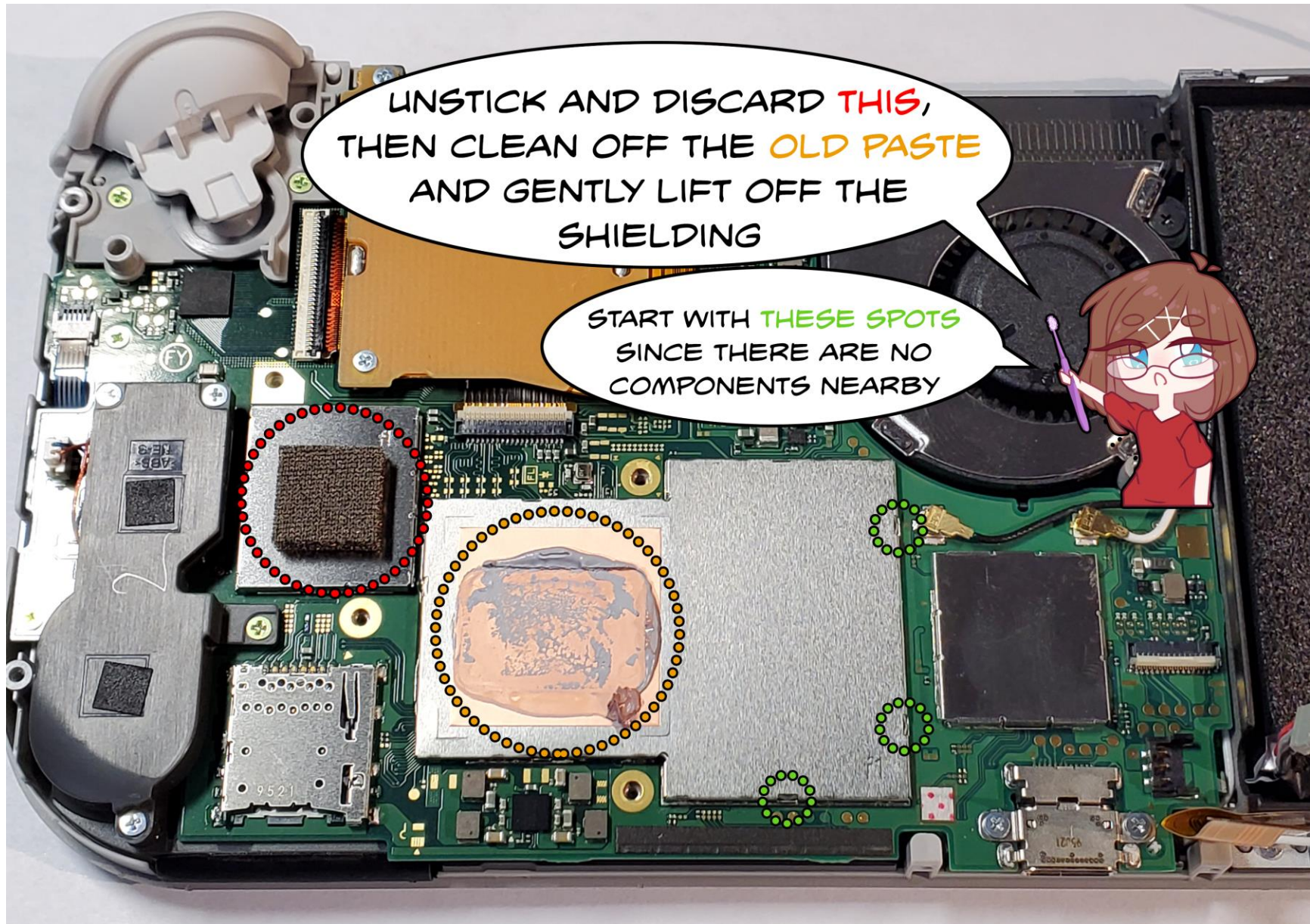


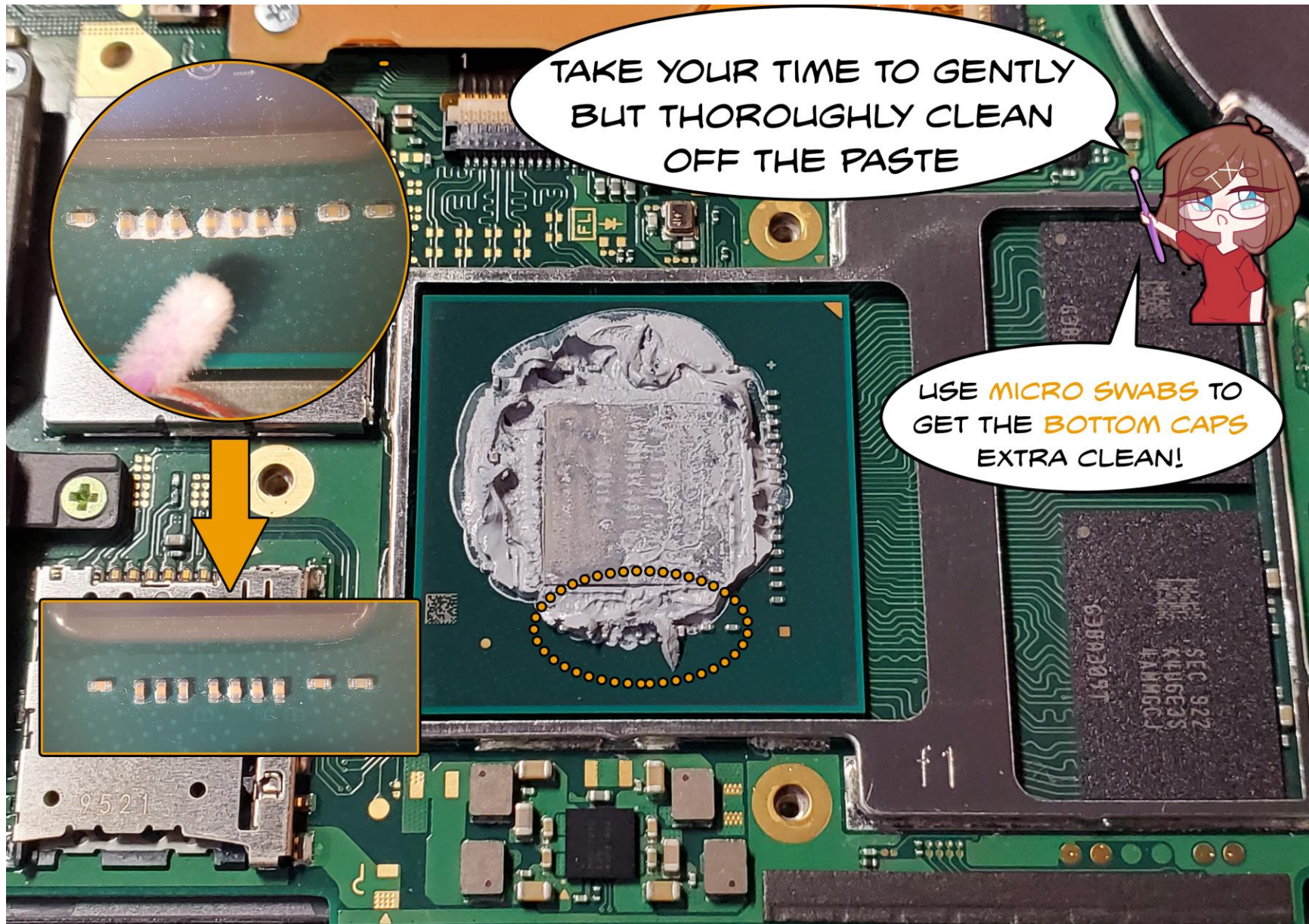
WATCH OUT FOR THIS FLEX CABLE AS
YOU UNSCREW AND REMOVE
THE SHIELDING!

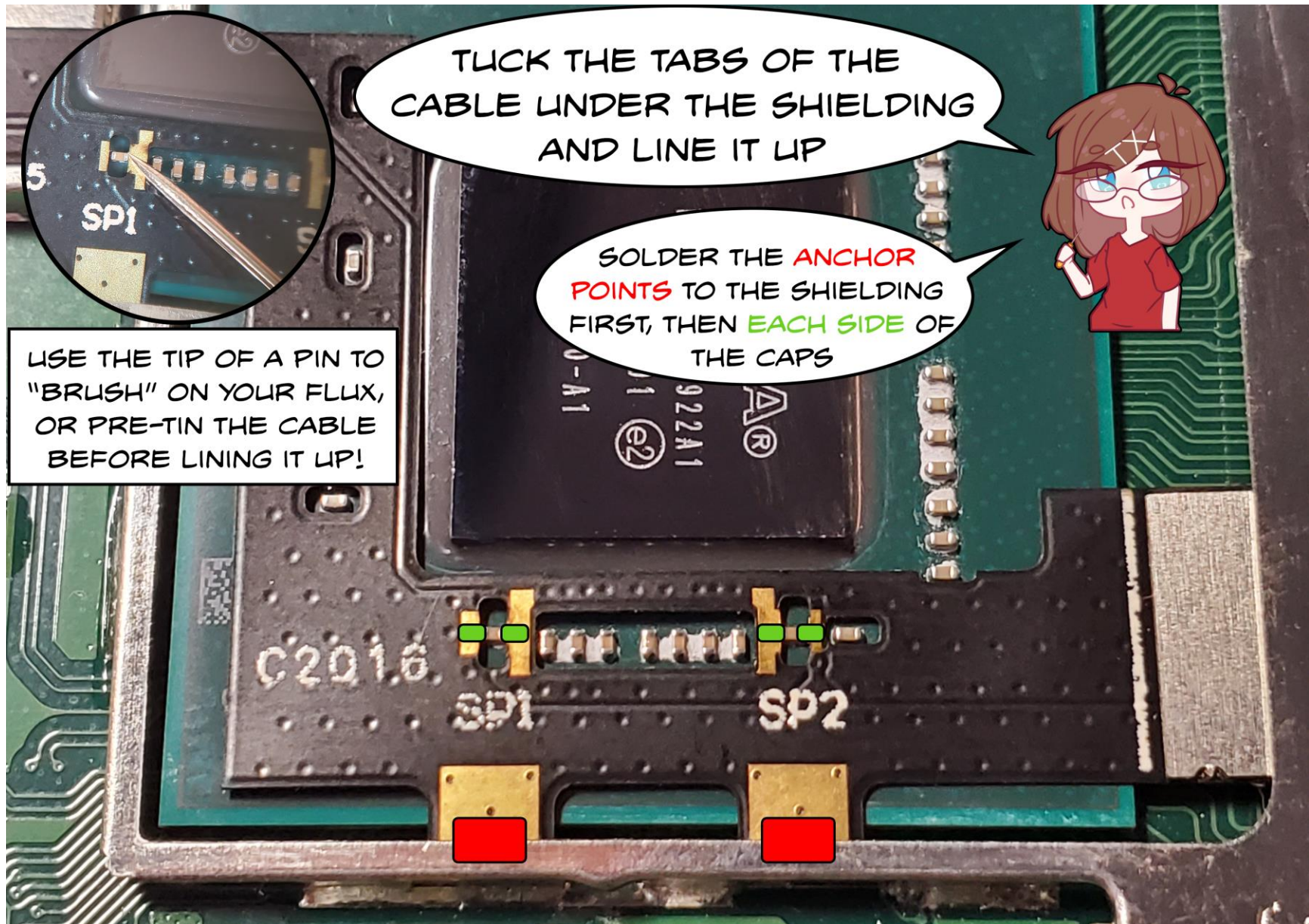


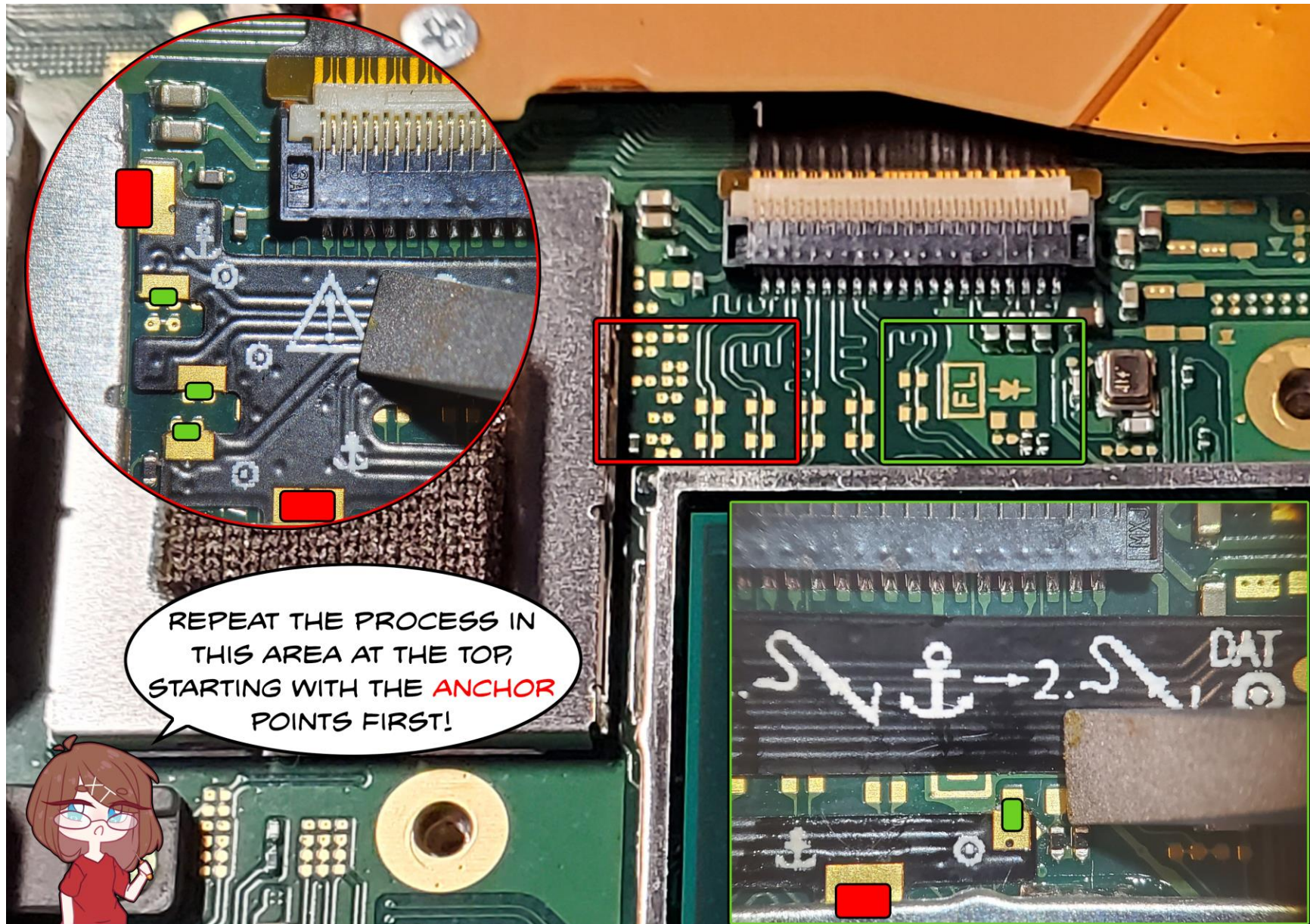
THE **GOLD** SCREW IS LONGER THAN THE OTHERS.
AS YOU LIFT OFF THE SHIELDING, LOOK OUT
FOR THE THERMAL PUTTY UNDERNEATH!

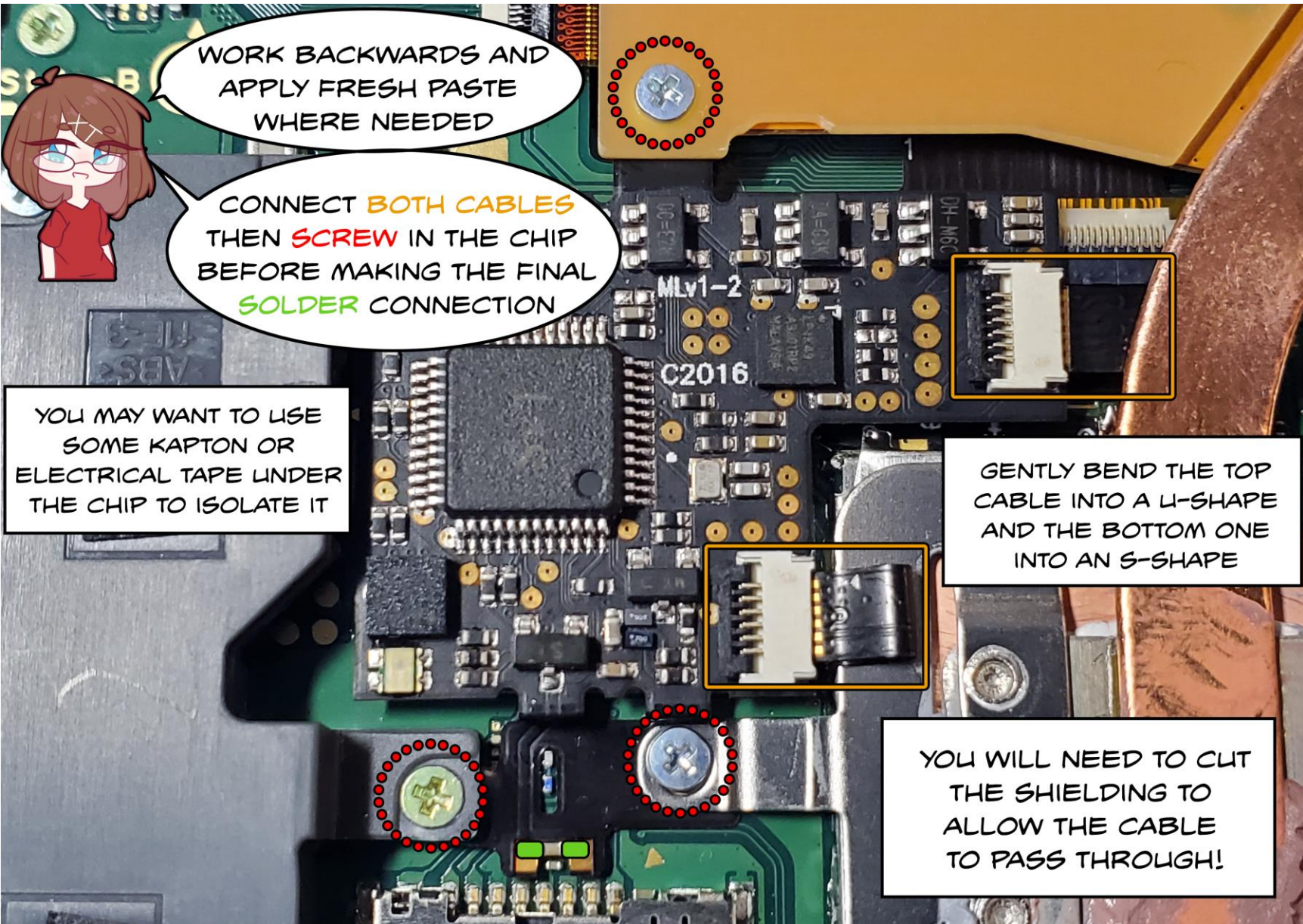




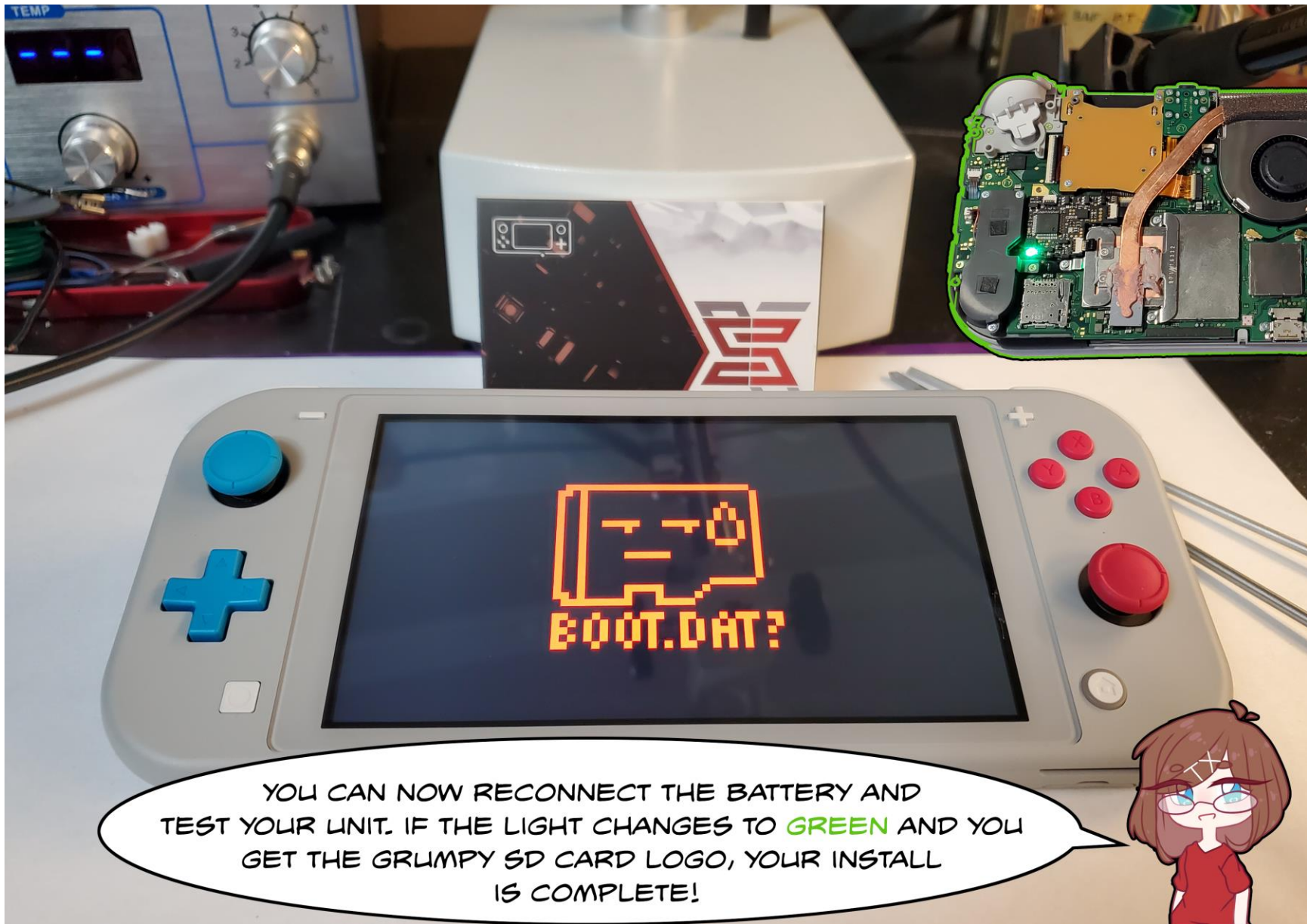


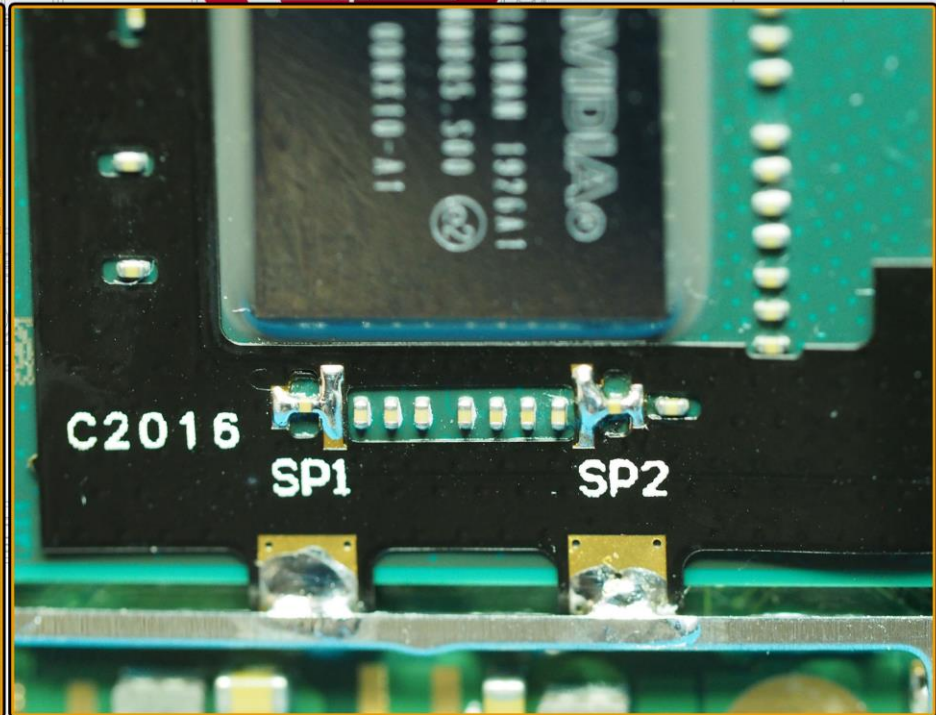
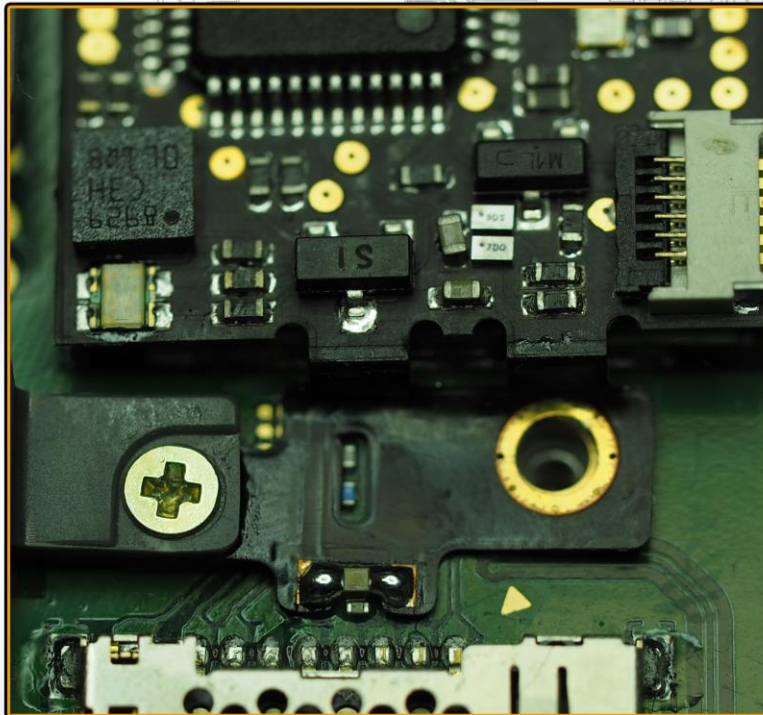
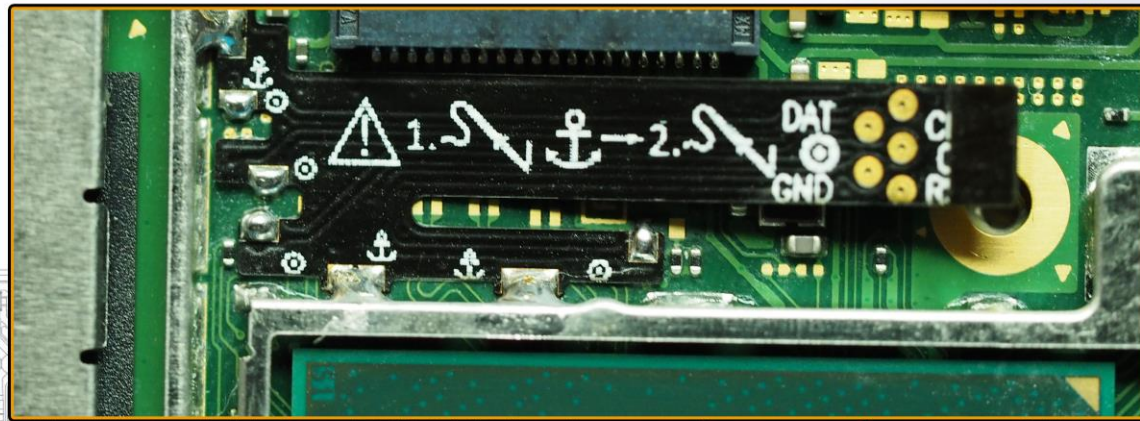












FAQ

Q - How difficult is this installation?

A - This is an advanced installation, if you don't have the proper tools or experience, we recommend contacting your local tiny soldering guy or mod shop to have the installation done for you.

Q - The light turns pink and system won't boot.

A - This means the chip is having trouble talking to the NAND, typically from bad solder joints.

Q - The light turns green and boots to the bootloader, but the Switch OS won't boot.

A - Make sure you are using a FAT32 formatted SD card, as you may be missing the exFAT driver. You may also need check the connection of SP1.

Q - I need more help!

A - Join the support forums (<https://team-xecuter.com/community/>) or chat (<https://xecuter.rocks/>).